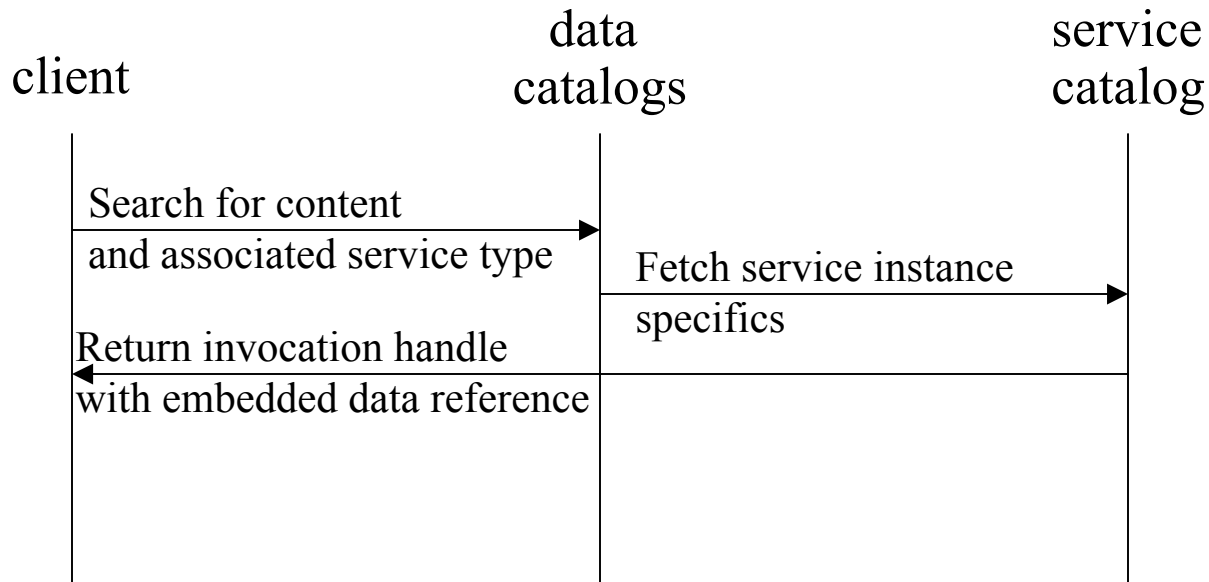


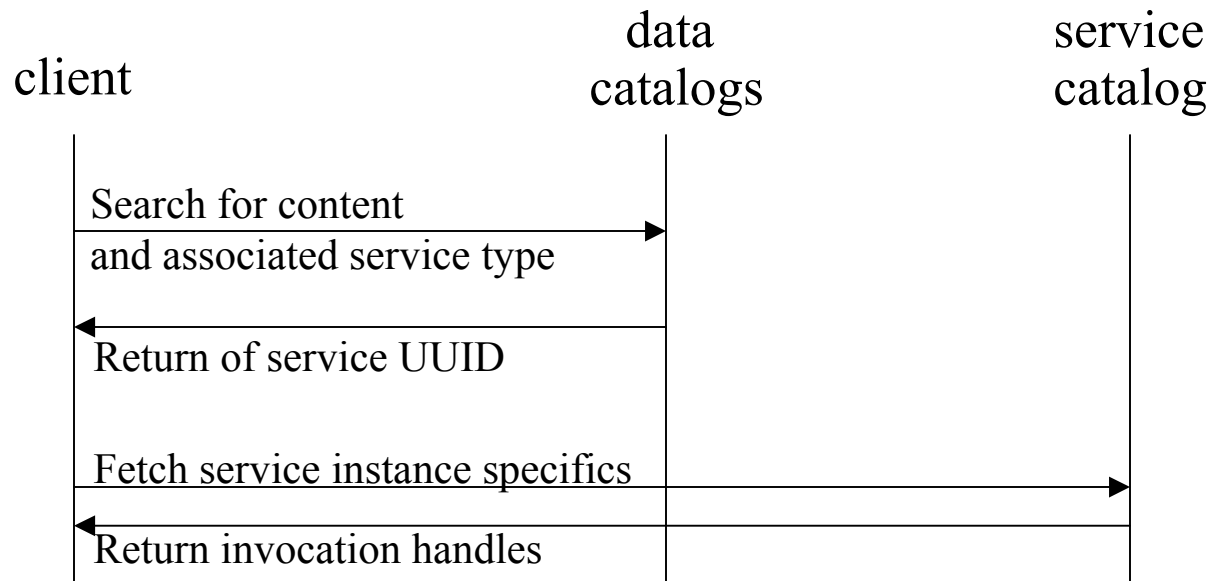
- Client can request different packaging by specifying a element set (B,S,F) or by specifying a pathnamed stylesheet to receive a transformed reponse from the catalog
- Use of a transform allows some creative responses, such as returning subset XML or even HTML to the user!

Use Scenario One



- Client seeks specific data content and is interested in identifying those served by web map servers
- ISO 19115 provides for multiple URLs associated with each data set being described
- URL returns UUID of service instance from the service catalog

Use Scenario Two



- Client seeks specific data content and is interested in identifying those with data access interface (WFS), identify WFS UUID from data catalog entry
- Find WMS services open to receive WFS inputs, and the handle of the WFS UUID, return WMS invocation handles
- Client has elements to chain two services